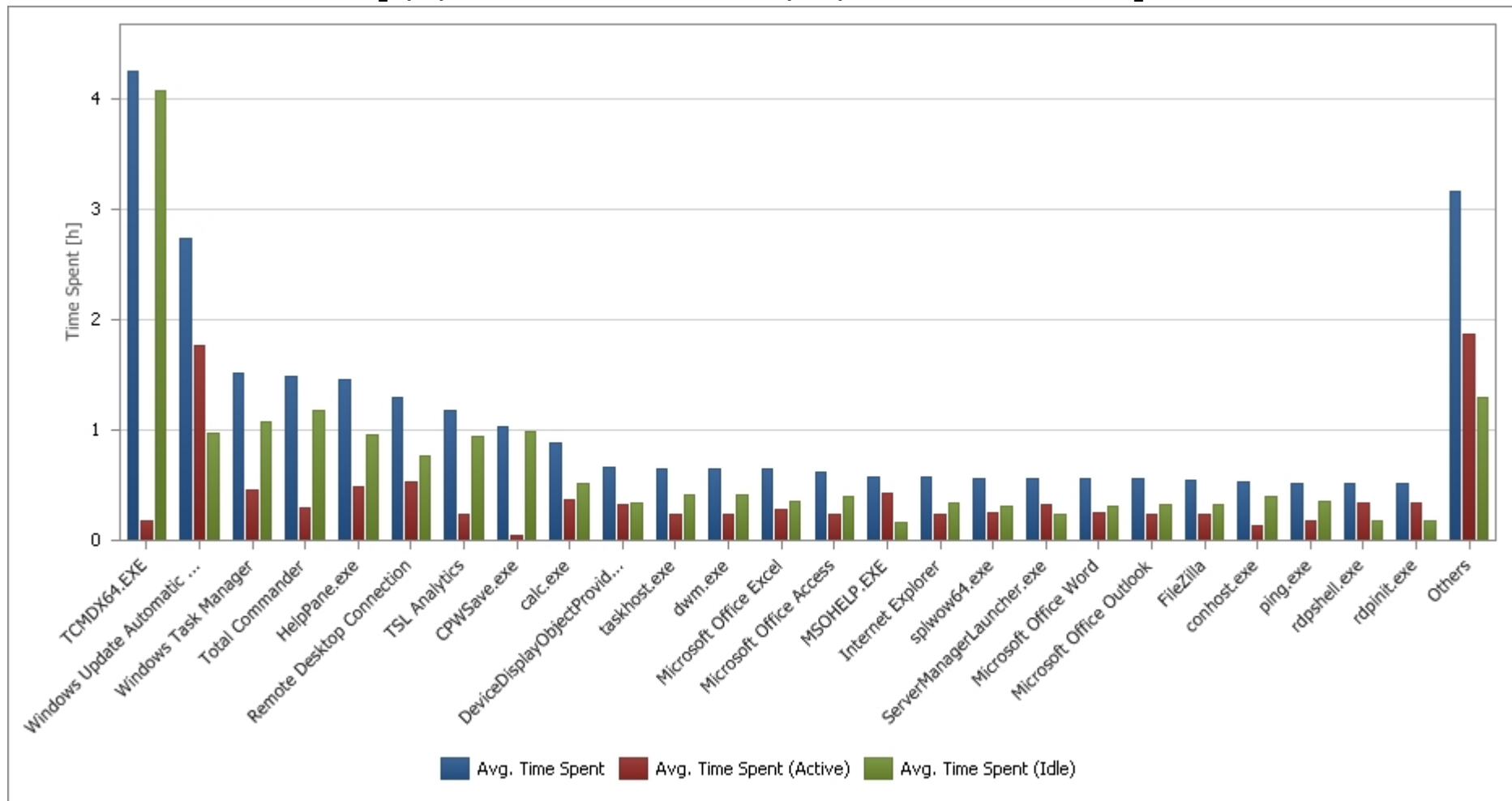


Application Usage Summary

[9/1/2010 12:00:00 AM - 9/30/2010 11:59:59 PM]



Application Name	Number of instances	Time spent	Avg. Time Spent	Avg. Time Spent (Active)	Avg. Time Spent (Idle)
AVG8AdminServerMonitor.exe	4	00h 00m	00h 00m	00h 00m	00h 00m
avgtray.exe	4	00h 00m	00h 00m	00h 00m	00h 00m
calc.exe	182	79h 36m	00h 53m	00h 22m	00h 30m
conhost.exe	32	07h 13m	00h 32m	00h 08m	00h 24m
CPWSave.exe	3	01h 05m	01h 02m	00h 03m	00h 58m
DeviceDisplayObjectProvider.exe	91	29h 53m	00h 40m	00h 19m	00h 21m
dwm.exe	14394	4626h 56m	00h 39m	00h 14m	00h 24m
dwwin.exe	6	00h 49m	00h 25m	00h 06m	00h 19m
FileZilla	121	32h 49m	00h 33m	00h 14m	00h 19m
fixmapi.exe	1	00h 03m	00h 03m	00h 03m	00h 00m
FOXITR~1.EXE	9	01h 08m	00h 15m	00h 09m	00h 06m
HelpPane.exe	52	36h 47m	01h 27m	00h 29m	00h 58m
Internet Explorer	109	31h 12m	00h 35m	00h 14m	00h 21m
jre-6u21-windows-i586-iftw-rv.exe	1	00h 09m	00h 09m	00h 09m	00h 00m
LogonUI.exe	3	00h 20m	00h 13m	00h 06m	00h 07m
Microsoft Office Access	13954	4335h 27m	00h 38m	00h 14m	00h 23m
Microsoft Office Excel	424	136h 05m	00h 39m	00h 17m	00h 22m
Microsoft Office Outlook	193	53h 36m	00h 34m	00h 14m	00h 19m
Microsoft Office Word	181	50h 20m	00h 34m	00h 15m	00h 19m
MSOHELP.EXE	27	08h 28m	00h 35m	00h 25m	00h 10m
Notepad	68	15h 28m	00h 27m	00h 16m	00h 10m
ping.exe	6	01h 22m	00h 31m	00h 10m	00h 21m
rdpinit.exe	1551	399h 51m	00h 31m	00h 20m	00h 10m
rdpshell.exe	1551	399h 51m	00h 31m	00h 20m	00h 10m
Remote Desktop Connection	22	13h 44m	01h 18m	00h 32m	00h 46m
ServerManagerLauncher.exe	759	212h 30m	00h 34m	00h 19m	00h 14m
sethc.exe	1	00h 06m	00h 06m	00h 06m	00h 00m

Application Name	Number of instances	Time spent	Avg. Time Spent	Avg. Time Spent (Active)	Avg. Time Spent (Idle)
splwow64.exe	8731	2455h 20m	00h 34m	00h 15m	00h 19m
taskhost.exe	14403	4627h 41m	00h 39m	00h 14m	00h 24m
TCMDX64.EXE	10	17h 23m	04h 15m	00h 11m	04h 04m
Total Commander	58	40h 12m	01h 29m	00h 18m	01h 11m
TSL Analytics	75	44h 03m	01h 11m	00h 15m	00h 56m
TSTheme.exe	58	03h 60m	00h 05m	00h 04m	00h 01m
WerFault.exe	25	04h 11m	00h 22m	00h 07m	00h 15m
Windows Task Manager	60	42h 32m	01h 31m	00h 27m	01h 04m
Windows Update Automatic Updates	9	11h 53m	02h 44m	01h 46m	00h 58m
Windows? installer	1	00h 09m	00h 09m	00h 09m	00h 00m
WinRAR	22	05h 21m	00h 27m	00h 18m	00h 09m
wlrmldr.exe	285	67h 25m	00h 28m	00h 18m	00h 10m
Totals:	AVG=1474	17794h 57m	00h 43m	00h 16m	00h 27m